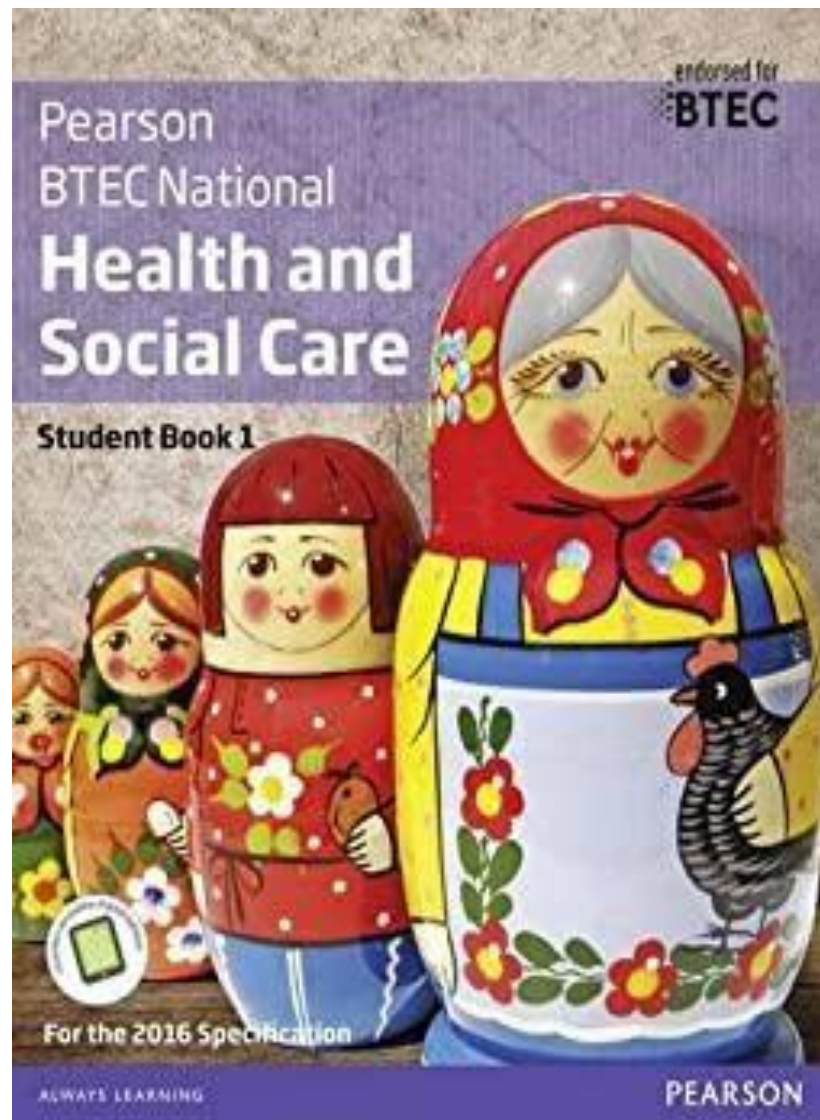


Level 3 BTEC Extended Certificate Health and Social Care



Transition Pack

Name: _____



What will I be studying?

This course allows you an insight in the many roles available within health and social care from nurses to social workers to childcare assistants and beyond. You will be studying a range of units which will help you to gain skills that will be valuable in your chosen profession or future study. You will learn about the human body and mind alongside the changes across time. You will learn what it means to work in the sector and what skills and behaviours you will need to develop. We will study the following units; although the final one is subject to change.

During unit one, Human Lifespan Development, you will focus on:

- Understand the different influences on an individual's development and how this relates to their care needs.
- You will be introduced to the biological, psychological and sociological theories associated with human lifespan development.
- You will explore the physical effects of ageing and the theories that help to explain psychological changes.
- **How you will be assessed: this is a paper based exam, that lasts for 1 hour 30 minutes, that is worth 90 marks.**

During unit two, Working in Health and Social Care, you will focus on:

- You will be introduced to the roles and responsibilities of health and social care practitioners and the organisations they work for.
- You will see how a wide range of roles, including doctors, nurses, physiotherapists, occupational therapists, social workers, youth workers, care workers and other professionals, work together to ensure that the individual needs of vulnerable people are met.
- **How you will be assessed: this is a paper based exam, that lasts for 1 hour 30 minutes and worth 80 marks. There will be four sections and include short- and long- answers.**

During unit five, Meeting Individual Care and Support Needs, you will focus on:

- You apply knowledge to provide the care and support that meets the needs of an individual in a health and social care environment.
- You will need to consider ethical issues that may arise and challenges the individual may face in order to provide personalised care.
- You will reflect on the different methods used by professionals working together in a multi-agency team to provide a package of care and support that meets individual needs.
- **How you will be assessed: Coursework. You will need to check that your work first meets all the pass criteria before moving on to merit and then finally distinction criteria.**

The final unit will also be a series of assignments based on in class work exploring a specific aspect of health e.g. physiological or psychological care. You will need to look at case studies as you did in unit five and use your knowledge to explain their behaviour or condition leading to treatment plans.

NETFLIX

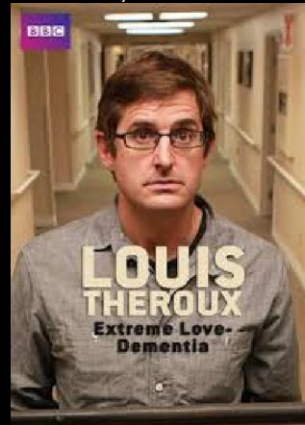
Babies



Marriage Story



Louis Theroux: Extreme love, Dementia



Five Feet Apart



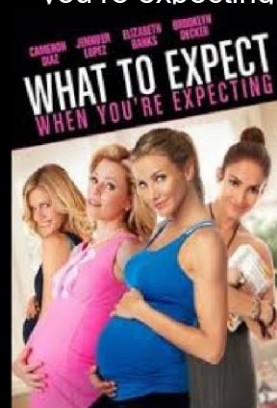
Brain on Fire



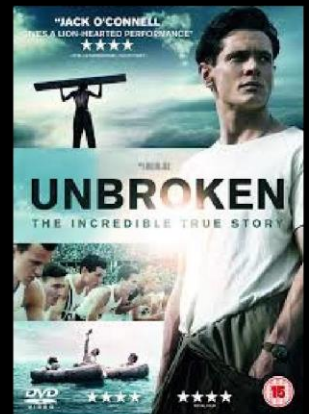
Theory of Everything



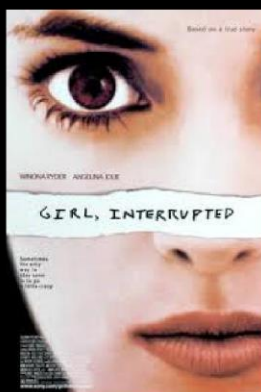
What to expect when you're expecting



Unbroken



Girl, interrupted



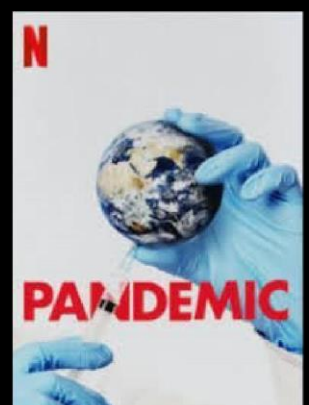
Call the Midwife



13Reasons Why



Pandemic: How to prevent an outbreak



Recommended Watching for Health and Social Care

Beyond NETFLIX

Elizabeth is Missing

Rio & Kate: Becoming
a Step family

Jesy Nelson: Odd
one out

Bohemian Rhapsody

BBC iPlayer



DVD

Confessions of a
Junior Doctor

Born to be
different

Secret life of... Year
Olds

Still Alice

4
On Demand



DVD

The Children Act

The Upside

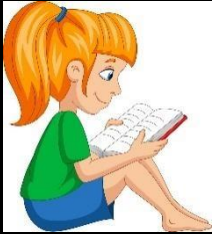
Beautiful Boy

Miss you Already

Amazon Prime



Beyond



Pig Heart Boy by Malorie Blackman



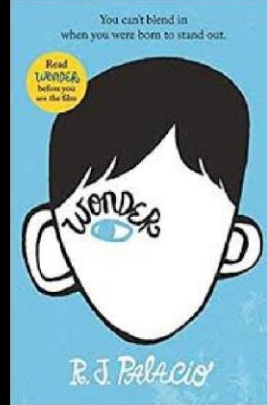
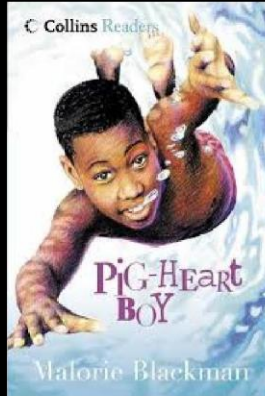
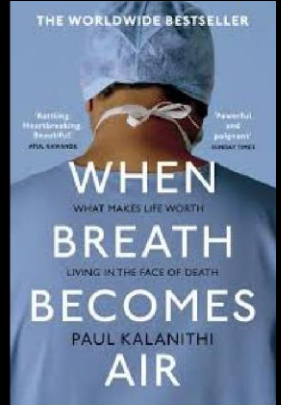
Wonder by R.J. Palacio



This is Going to Hurt by Adam Kay



When Breathe becomes Air by Paul Kalanithi

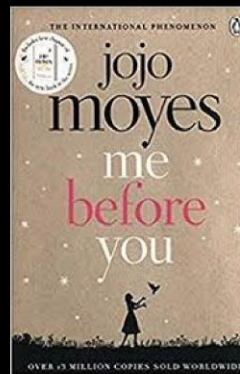


Further Reading

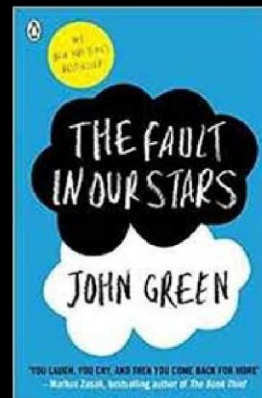
The Hate U Give by Angie Thomas



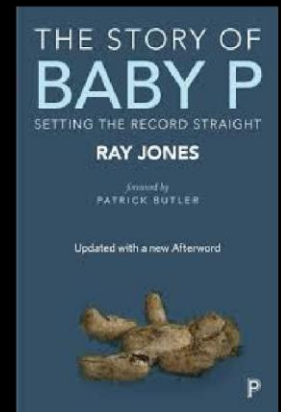
Me Before you by Jojo Moyes



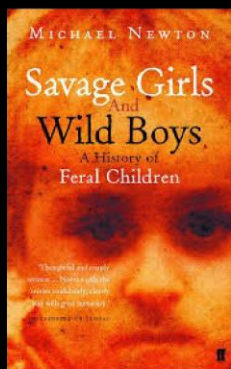
The Fault in Our Stars by John Green



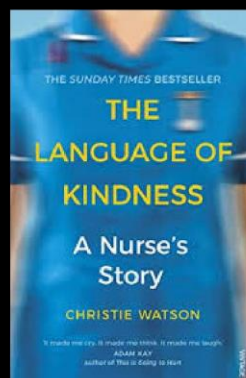
The Story of Baby P by Ray Jones



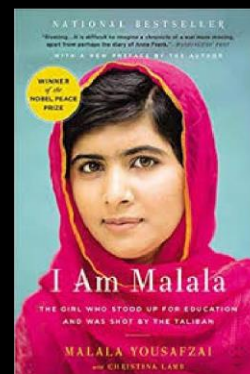
Savage Girls and Wild Boys by Michael Newton



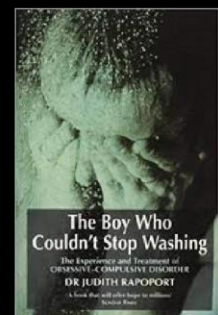
The Language of Kindness by Christie Watson



I am Malala by Malala Yousafzai



The Boy Who Couldn't Stop Washing by Dr Judith Rapoport



Recommended Reading for Health and Social Care

Yes some of these are also films, if you prefer!

Health and Social Care in the Media

It is important to make the public realise about the issues which are prevailing in society relating to health and social care. One way in which public awareness is raised about health and social care in general and issues that exist within the health and social care sector is through the media.

Your task is to pick...

- x2 Films
- x1 Book
- x2 Documentaries

You then need to write an essay (at least 2 sides of A4) with the following title:
'Discuss the portrayal of Health and Social Care within the media' - when discussing you need to consider positive and negatives


You must watch/read the some of the examples on the previous pages you have picked and create notes to help with your essay. Consider the following:

- What issues, if any, are being raised in the stimulus?
- How does the stimulus present H&SC?
- Is the stimulus informative/helpful and why?
- Are there any quotes/scenes etc that stand out to you and why?
- How effective is the stimulus in raising public awareness about H&SC/Issues?

This list is NOT exhaustive there may be other questions/ideas you wish to consider as you watch or read.

Glossary

Research a definition for each of the terms below and come up with a symbol that may help you remember what the term means.

Term	Definition	Symbol
Adolescence	An important status change following the onset of puberty during which a young person develops from a child into a adult.	
Advocate		
Attachment		
Care package		
Clinical Commissioning Groups (CCGs)		
Development		
Discrimination		
Diversity		
Empathy		
Ethical		9

Fine Motor Skills		
Growth		
Holistic Approach		
Milestone		
Nature		
Nurture		
Risk Assessment		
Safeguarding		
Self-Concept		
Self-Esteem		10

Research task



Chose a professional from the following:

- Midwife
- Paramedic
- Paediatric nurse
- Nutritionist
- Physiotherapist

You could choose your own idea from health and social care roles if you prefer.

Create a fact file for your chosen job role

You could include:

- A day in the life of.....
- General roles and responsibilities
- Routes into the role/ qualifications required
 - Skills & qualities
 - Average pay
 - Where they work
 - Who they work with

And anything else you think may be suitable



Important legislations and policies in H&SC

Write a few lines for each one, providing an example of the policy and how it's used in Health and Social Care. You will need to conduct your own research to complete this task.

1. Health and Safety act 1974

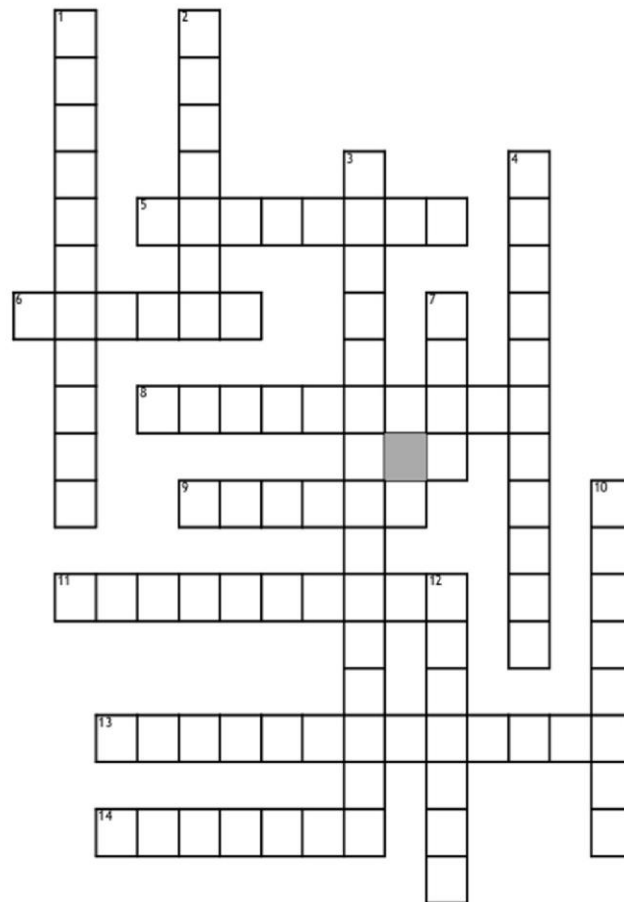
2. Care standards act 2000

3. Control of substances hazardous to health (coshh) regulations 2002

4. Moving and handling operations regulations 1992

5. Personal protective equipment at work regulations 1992

Health and Social Care skills and qualities



Across

- 5. a word used when a group of people work together
- 6. one of many words used that is seen as manners
- 8. another word for believing in yourself
- 9. a trait you have to show everyday
- 11. another word for being comforting
- 13. this word has many types of ways of doing this
- 14. another word for truthful

Down

- 1. you must have this quality to be successful as many service users will seek this quality in you
- 2. something you have to show people
- 3. another word for private
- 4. a word given to keep track of something
- 7. rhymes with hind
- 10. when something is time consuming, this quality is useful
- 12. walking in somebody else's shoes

